



Frank A. Bliley's
“Cousin's Album”
C1880s

Album 5. Rosa & Nellie Bliley's Cousin's Album — 1860s–1880s Scanned: August 2015

Introduction

What a beautiful gift from Willie and Susie Deer in Renwick, Iowa to their cousins Rosana “Rosa” (23) and Ellen Lousina “Nellie” Bliley (20), back in Harbor Creek Township, east of Erie, Pennsylvania. The date was August 27, 1863. The album is an expensive one with a brass clasp and gold leaf detailed design.

There are some very nice photos of the Bliley family members, and only two photos of the Mead family, and those were living in Harbor Creek.

Charles A. Bliley
Rochester, NY, USA



Scanning Techniques and Practices



The album consisted pages containing one frame on each page for a photo. The photos were removed from the album frame and scanned individually.

All files are in the TIFF format to retain the image's high quality.

NOTE: All images were color corrected and adjusted for maximum clarity to remove effects of aging or tinting, or to improve the contrast to bring out “hidden” details. Consequently, these scans may not represent the actual images as seen in 2015. These adjustments were done for the benefit of future viewers who may not have the tools or skills to make these adjustments.





To Cousin's
Rosa and Nellie
from
Willie and Susie Dear
Renick Mo Aug 27th
1883.







Charles O. Wagner & Wilfred Bliley

(Scratched on reverse by F.A. Bliley)

Tintype Photo 2 of 2 of Session

Left
Charles O. Wagner

Right
Mary Ann H. Bailey



Charles O. Wagner & Wilfred Bliley

(Scratched on reverse by F.A. Bliley)

Tintype Photo 1 of 2 of Session

Let

John O. Wagner

Real

W. F. B. Wiley



Will Ryan & Albert Sewell(?)

Tintype C1880?

Will Ryan "Hired Hand" on C. Bliley Farm

Right

Albert Lowell

Left

proposed

William Ryan



Dolph Bros.

Eric, Pa.



Alexander B. Wiley



Additional Copies from the plate from which
this picture is taken can be had if desired

Mary Ann



Weber Bros.

Erie, Pa.



Weber Bros. Erie, Pa.

Rosana "Rose" Jane Bliley Curtis

B: Sept. 7, 1860 — D: June 11, 1909

Rosana Jane Bliley Curtis
Born Sept. 7, 1860
Died June 11, 1909.



Josephine Bliley-Bonnell

Josephine Bliley-Bonnell

Ohlweiler's

GALLERY,

Erie, Pa.



Frank A. Biley

1886





Wilfred H. Bliley

Wilfred H B Liley



Wilfred H. Bliley

F. C. Bliley's
Picture of
Wilfred H. Bliley



Alexander Bliley

~~FROM~~

Alexander B. Wiley



Wilfred Henry Bliley

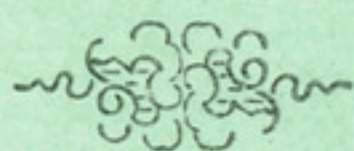
C1875

Wilfred Henry Bliley
Born May 29, 1859
Died April 25, 1928

F. J. WEBER & BRO.

Photographers,

ERIE, PENN.



Portraits, Views, Machines, Models, Stereoscopic Views, copying and all kinds of Photographing done.

Pictures finished in Ink, Crayon, Oil or Water colors

All negatives numbered and preserved. Additional copies of this or all pictures at reduced rates.

Constantly on hand an assortment of square and oval Frames

All orders by mail or otherwise promptly attended to

Do not trust your pictures out of town to be copied, to traveling photograph bummers, who make great promises and generally deliver very poor work.

1875

1878



Ellen Bliley - Wilson -
Deer.

Renick, Mo.

Died 188 -

account of Frank Bliley



Ellen Bliley Wilson Deer



Lewis and Willis Mead

Lewis Mead
Willis Mead



Copies can be had at any time if desired.



Alice Mead Dwello



Alice Mead-Dwelle

Born May 31, 1858

Died July 18, 1927



Wilfred Henry Bliley, C1869

Wilfred H. Bliley.
Born May 29, 1859
Died April 25, 1928.

R. J. Weber,

PHOTOGRAPHER.

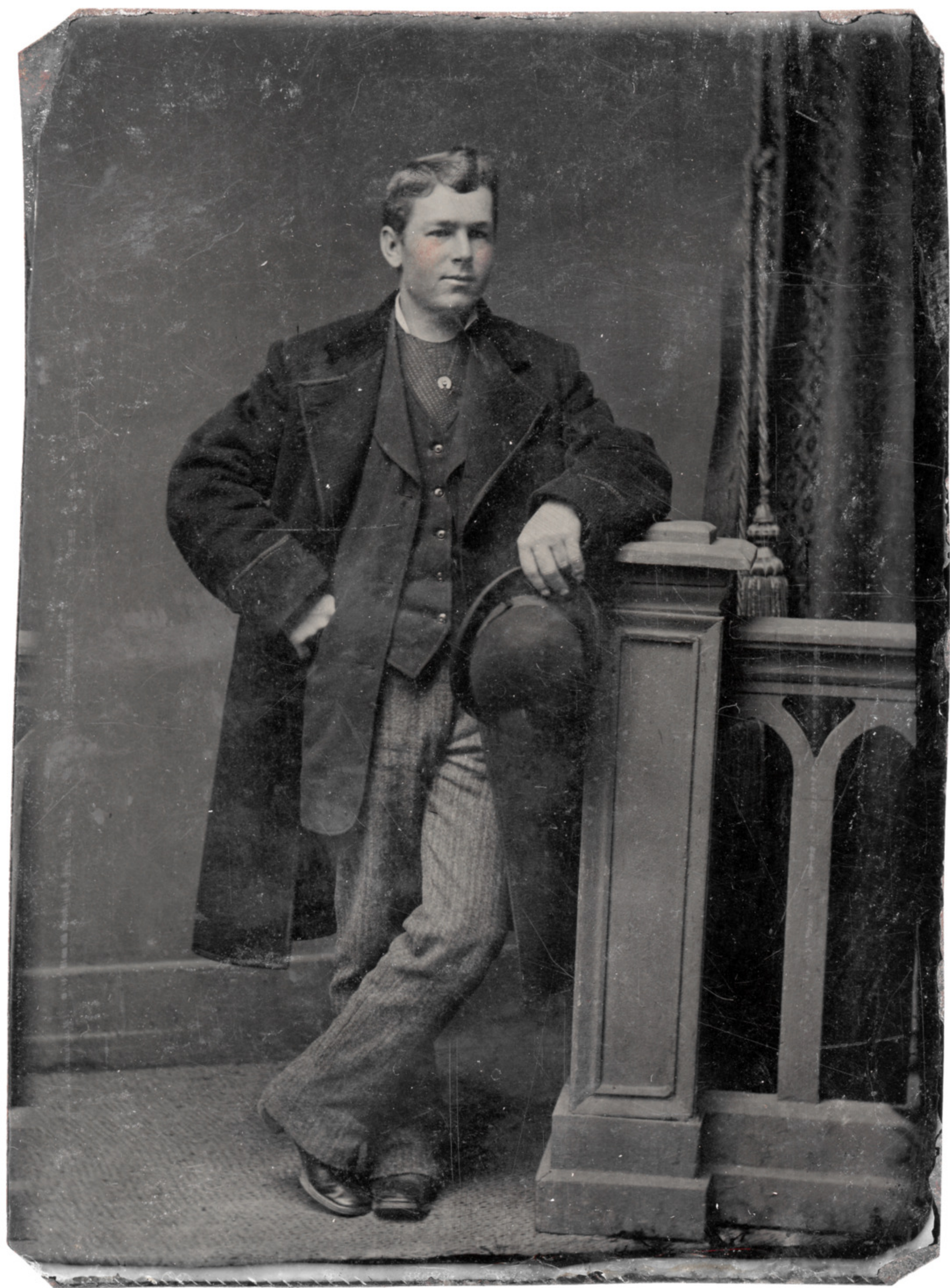
East Ninth Street, Erie, Pennsylvania.



Wm. Fred H. B. Bley



Mildred H. Bliley



Wilfred H. Bliley



E. H. Ohlwiler, Photographer, Erie, Pa.

Wilfred H. Bliley



Willis & Lodema Smith-Mead
Family

Willis Mead
Lodema Smith - Mead



Elma Davis Atkinson



Edmund Jackson



Tintype Photo Uncaptioned:
Is this Elama Davis Atkinson,
her Sister, or another?



A. Hawkes

West Union, Iowa.

Rear Caption: Hoyer

Hoyer

Hawkes

West Union, Iowa.



Charles Sewell

Charles Sewell



Weber Bros.,

Erie, Pa.



F. B. Pier,

PHOTOGRAPHER,

Corner 7th and State St., Erie, Pa.

